

Sample Ballot
Beaufort County, North Carolina
November 2, 2021

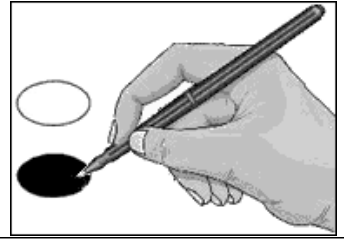


N0006



BALLOT MARKING INSTRUCTIONS:

- A. With the marking device provided or a black ball point pen, completely fill in the oval to the left of each candidate or selection of your choice as shown.
- B. Where authorized, you may write in a candidate by filling in the oval and writing the name on the Write-in line.
- C. If you tear, deface or wrongly mark this ballot, return it to request a replacement.



TOWN OF BATH

Commissioner
(You may vote for TWO)

Donald W. Shreve

Donna Wortman

Write-in

Write-in

End of Ballot